

## ROMANIAN SPECIES OF LUCANIDS (COLEOPTERA: SCARABAEOIDEA: LUCANIDAE) IN THE COLLECTIONS OF “GRIGORE ANTIPA” NATIONAL MUSEUM OF NATURAL HISTORY

MELANIA STAN

**Abstract.** The seven species of stag beetles of the Romanian fauna are present in the coleopteran collection of the Museum: *Aesalus scarabaeoides scarabaeoides* (Panzer), *Ceruchus chrysomelinus* (Hochenwarth), *Sinodendron cylindricum* (Linnaeus), *Lucanus cervus cervus* (Linnaeus), *Platycerus caraboides caraboides* (Linnaeus), *Platycerus caprea* (De Geer) and *Dorcus parallelipedus* (Linnaeus). Information on the collecting data and distribution maps are given for each species. We present the male and female habitus for the two species of *Platycerus*.

**Résumé.** Les sept espèces de lucanes de la faune de Roumanie sont présentes dans la collection des coléoptères du muséum: *Aesalus scarabaeoides scarabaeoides* (Panzer), *Ceruchus chrysomelinus* (Hochenwarth), *Sinodendron cylindricum* (Linnaeus), *Lucanus cervus cervus* (Linnaeus), *Platycerus caraboides caraboides* (Linnaeus), *Platycerus caprea* (De Geer) et *Dorcus parallelipedus* (Linnaeus). On donne des informations sur les données de la capture et les cartes de distribution pour chaque espèce. Nous présentons les photos de l'habitus mâle et femelle pour les deux espèces de *Platycerus*.

**Key words:** Coleoptera, Lucanidae, Romania, collections, “Grigore Antipa” National Museum of Natural History.

### INTRODUCTION

From the 17 stag beetle species and subspecies of Europe, in the Romanian fauna there are only seven species: *Aesalus scarabaeoides scarabaeoides* (Panzer), *Ceruchus chrysomelinus* (Hochenwarth), *Sinodendron cylindricum* (Linnaeus), *Lucanus cervus cervus* (Linnaeus), *Platycerus caraboides caraboides* (Linnaeus), *Platycerus caprea* (De Geer) and *Dorcus parallelipedus* (Linnaeus), included in four subfamilies, according to the Catalogue of the Palaeartic Coleoptera (Bartolozzi & Sprecher-Uebersax, 2006).

Although they are species which do not pose problems in identification, a catalogue of the Romanian Lucanidae species preserved in the collections of “Grigore Antipa” Museum was not yet published. A very small part of the presented material was previously published by Ed. Fleck (1906), A. L. Montandon (1906), Șt. Negru & A. Roșca (1967). In 1997, Ș. Procheș published a paper with considerations on the biogeography and ecology of the Romanian species using specimens of Palaeartic Coleoptera Collection.

*Lucanus cervus* is protected by the national legislation, being included in the Annexes 3 and 4 A of OUG 57/2007, on the regime of the protected natural areas, conservation of the natural habitats, of wild flora and fauna. It is registered in the second appendix of the Habitats Directive of the European Union from 1992, which requires that member states set aside Special Areas of Conservation. The species is also registered in the third appendix of the Convention on the Conservation of European Wildlife and Natural Habitats (Bern Convention) of 1982.

*MATERIAL AND METHODS*

This paper presents data on the species/specimens preserved in the following collections:

- Collection of Palaearctic Coleoptera which contains the collections made by Eduard Fleck, Dezső Kenderessy, Friedrich Deubel and Arnold Lucien Montandon, acquired at the end of the 19<sup>th</sup> and the beginning of the 20<sup>th</sup> century, as well as specimens collected by Richard Canisius (54 specimens). Unfortunately for these specimens the collecting data are missing.
- “Dr. Nicolae Săvulescu” Collection, acquired during the period 1961-1982 (34 specimens);
- collection organized by the author, including specimens from Dr. Nicolae Săvulescu, which entered in the museum patrimony in 1992, after his death, specimens which come from the former Fleck’s collection and Montandon’s collection, not included in the Palaearctic Collection, specimens collected by Emil Váradi from Banat and Maramureş in the first half of the 20<sup>th</sup> century, specimens collected by the specialists of the Museum during different research projects on the Romanian fauna, specimens donated by Viorel Ungureanu, eng. Igor Ceianu, Dr. Vladimir Brădescu and Dr. Mihai Şerban Procheş.

A part of the Lucanidae specimens of the Romanian fauna were identified by Arnold Lucien Montandon, Eduard Fleck, Emil Váradi, Ştefan Negru, Atena Roşca, Nicolae Săvulescu, Rodica Serafim, Viorel Ungureanu, Şerban Procheş.

*RESULTS*

In the collections of “Grigore Antipa” Museum there are all seven species. In this paper, they are listed alphabetically, grouped in subfamilies. For each species it is mentioned the number of specimens and sex, collecting sites alphabetically grouped in counties, collecting data and collector’s name. Nomenclature is according to the Catalogue of Palaearctic Coleoptera (Bartolozzi & Sprecher-Uebersax, op. cit.).

All the material presented below was identified/ revised by the author.

Abbreviations:

Mt./Mts - Mountain/s; spec. (s) – specimen/s; coll. – collection; MGAB – “Grigore Antipa” National Museum of Natural History

Abbreviations of the county names in Romania:

AG – Argeş; AR – Arad; B – Bucureşti; BC – Bacău; BH – Bihor; BR – Brăila; BV – Braşov; BZ – Buzău; CJ – Cluj; CL – Călăraşi; CS – Caraş Severin; CT – Constanţa; CV – Covasna; DB – Dâmboviţa; DJ – Dolj; GJ – Gorj; GR – Giurgiu; HD – Hunedoara; IF – Ilfov; IL – Ialomiţa; IS – Iaşi; MH – Mehedinţi; MM – Maramureş; MS – Mureş; OT – Olt; PH – Prahova; SB – Sibiu; SJ – Sălaj; SM – Satu Mare; SV – Suceava; TL – Tulcea; TM – Timiş; TR – Teleorman; VS – Vaslui; VL – Vâlcea; VN – Vrancea.

Subfamily Aesalinae Macleay, 1819

*Aesalus scarabaeoides scarabaeoides* (Panzer, 1793)

(Fig. 1 A)

*Examined material:* 1 ♀, Comana forest, leg. A. L. Montandon (GR), (coll. A. L. Montandon).

*Other examined material:* 1 ♂, Hungary (Hungar. bor., Ed. Reitter) (coll. Ed. Fleck); 1 ♀, Hungary [now in Slovakia], Neutra’er Comitát, leg. H. Rafflesberg; 1 ♀, Strasbourg, det. Aug. Puton, 1900 (donation Aug. Puton), 2 ♀♀, coll. D. Kenderessy (without collecting data).

Subfamily Dorcinae Parry, 1864  
*Dorcus parallelipedus* (Linnaeus, 1758)

(Fig. 2 A)

*Examined material:* 1 ♀, Domnești, 4.07.2009, leg. E. Iorgu; Galeșu: 1 ♂, 18.07.1990; 1 ♂, 7.08.1997, leg. C. Pârvu; 1 ♀, Stoenesti, 7.07.1990, leg. Ș. Procheș (AG); 1 ♂, Utviniș (forest), 21.06.1977, leg. G. Andrei (AR); 3 ♂♂, Moinești, leg. R. Canisus (BC); 1 ♀, Bărağanul, 10.09.1991, leg. I. Ceianu (BR); 1 ♂, 1 ♀, Bran, leg. R. Canisus (BV); București: 2 ♂♂, leg. A. L. Montandon (coll. A. L. Montandon); 1 ♂, 1 ♀, 12.07.1963, leg. A. Roșca; 1 ♂, 1.07.1967, leg. Șt. Negru; 1 ♂, 14.09.2007, leg. E. Pisciă; București (Băneasa forest): 1 ♀, 24.05.1954, leg. A. Roșca; 1 ♀, 28.05.1959; 2 ♂♂, 1 ♀, 15.07.1979, leg. N. Săvulescu; 1 ♂, 25.06.1994, leg. I. Ceianu; 1 ♀, Cișmigiu park, 20.05.1995, leg. B. Matei; 1 ♀, București (in Museum), 15.06.2001, leg. I. Matache; 1 ♀, in the garden of the University of Agronomic Sciences, 5.06.2004; 1 ♀, same place, 14.06.2004, leg. V. Ungureanu; 1 ♂, Kiseleff park, 1.06.1998, leg. G. Andrei; Museum's park: 1 ♂, 26.07.2005, leg. I. Matache; 1 ♂, 18.04.2006, leg. D. Ruști; 1 ♂, 26.06.2006, leg. G. Andrei; 1 ♂, 4.09.2008, leg. A. Petrescu (B); 1 ♀, Arbănași (Beceni, school camp), 31.07.2005, leg. V. Ungureanu; Cotul-Ciorii: 1 ♂, 1 ♀, 22-26.05.1963; 1 ♀, 8-10.11.1963, leg. I. Ceianu; 1 ♀, Păcele Mici, 1.05.1989, leg. I. Matache; 1 ♂, Păcelele (Vulcanii Noroiși), 15.06.2002, leg. V. Ungureanu; Unguriu (Măgura): 1 ♂, 12.06.2004, under rotten log, skirt of beech forest, leg. M. Aurelian; 2 ♂♂, 19.07.2004, under rotten log, beech forest, leg. V. Ungureanu; 1 ♀, 28.06.2006, leg. V. Ungureanu (BZ); 3 ♂♂, 5 ♀♀, Budești, 5.06.1964, leg. A. Roșca (CL); Băile Herculane: 1 ♂, 1 ♀, 07.1950, leg. E. Váradi; 1 ♀, 23.08.1956, leg. N. Săvulescu; 1 ♂, 5 ♀♀, 3.07.1960, leg. N. Săvulescu (coll. N. Săvulescu); 2 ♂♂, 1 ♀, 12.07.1962; 1 ♂, 8.07.1963; 1 ♂, 1 ♀, 12-19.05.1964; 1 ♂, 2 ♀♀, 4.07.1964; 1 ♂, 9.07.1964; 2 ♂♂, 1 ♀, 12.06.1965; 1 ♀, 28-31.05.1966; 1 ♀, 25.05.1971; 2 ♀♀, 1.08.1971; 1 ♀, 3.08.1975; 1 ♂, 2.06.1977; 1 ♂, 4.06.1977; 1 ♀, 5.06.1977; 3 ♂♂, 1 ♀, 9.06.1977; 1 ♂, 10.06.1977; 14 ♂♂, 8 ♀♀, 17-31.07.1978; 9 ♂♂, 7 ♀♀, 1-7.08.1978, leg. N. Săvulescu; 1 ♀, 8.07.1964; 2 ♀♀, 24.05.1965; 2 ♀♀, 10-20.05.1968, leg. I. Căpușe; 3 ♀♀, 26.05-1.06.1965; 2 ♀♀, 10.06.1974; leg. A. Popescu-Gorj; 1 ♂, 6.07.1968, leg. Vl. Brădescu; 1 ♀, Bozovici, 7.07.1961, leg. I. Nemeș; 1 ♀, Caraș Gorges 7.08.2001, leg. R. Serafim; Domogled Mt.: 1 ♀, 19.05.1963, leg. A. Popescu-Gorj; 1 ♀, 14.07.1978, leg. I. Ceianu; 1 ♀, 25.07.2005, leg. D. Kurzeluk; Moldova Nouă: 1 ♂, 24-25.05.1964, 1 ♂, 29.06.1964; 7 ♂♂, 5 ♀♀, 26-28.05.1971; 1 ♂, 23.05.1973; 1 ♂, 25.05.1973; 1 ♂, 26.05.1973; 1 ♀, 28.05.1973; 1 ♀, 27.05.1975, 1 ♂, 28.05.1975; 2 ♂♂, 29.05.1975, 1 ♀, 30.05.1975, leg. N. Săvulescu; 1 ♂, Oravița (Marila), 1.07.1963, leg. N. Săvulescu; 1 ♀, Sasca Montană, 28.06.1961, leg. M. Tâlpeanu; 1 ♂, Vârciorova, leg. R. Canisus; Cerna valley: 1 ♀, 3.09.1967, leg. D. Dumitrescu; 1 ♂, 1 ♀, 15.07.1972, leg. D. Murariu (CS); 1 ♀, Băneasa, 20.07.1958, leg. Șt. Negru; Canaraua Fetii (Băneasa): 1 ♀, 2.06.1965, leg. Șt. Negru; 1 ♀, 14.07.1966, leg. N. Săvulescu; 1 ♂, Dumbrăveni forest (Furnica forestry range), 14.05.1995, leg. G. Andrei; 1 ♀, Hagieni forest, 13.08.1962, leg. Șt. Negru; 1 ♀, Iortmac (Băneasa), 2.06.1965, leg. N. Săvulescu; 1 ♀, Murfatlar, coll. Ed. Fleck; Negureni forest: 1 ♀, 21.07.1993, leg. M. Andrei; 1 ♂, 2 ♀♀, 17.05.1994, leg. G. Andrei & M. Andrei; 1 ♀, 25.06.1995, leg. C. Pârvu; 1 ♀, Oltina, 11.06.1960, leg. N. Săvulescu; 1 ♂, 4 ♀♀, Slava Rusă (Babadag forest), 22.06.1993, leg. F. Achim & I. Matache (CT); 1 ♀, Corbii Mari (Pântenoaia forest), 21.06.1979, leg. D. Lupu; 1 ♀, Gemenea, 06.1950, leg. A. Roșca; 1 ♀, Titu, leg. R. Canisus; Voinești: 1 ♀, 05.1950; 1 ♂, 18.05.1961, leg. A. Roșca (DB); Bistreț: 1 ♀, 25.06.1981, leg. R. Serafim; 1 ♀, 26.06.1981, leg. D. Dumitrescu; Craiova: 13 ♂♂, 8 ♀♀, 5.06.1964, leg. Șt. Negru; 1

♀, 21.02.2007, leg. G. Chișamera; 1 ♂, Gighera, 23.06.1960, leg. ?; 1 ♂, Giurgița, 6.05.1959, leg. ?; 2 ♀♀, Radovan (Panaghia forest), 14-15.06.1984, leg. G. Andrei (DJ); 1 ♀, Cioclovina, 5.06.1959, leg. X. Scobiola; 9 ♂♂, 7 ♀♀, Motru Sec (Lupșa valley), 18.06.1992, leg. R. Serafim & N. Rădulet; 2 ♂♂, 1 ♀, Novaci, leg. R. Canisius; 1 ♀, Runcu (Sohodol valley), 20.06.1992, leg. R. Serafim; 1 ♂, Tarnița (Logrești), 9.07.2004, leg. A. Petrescu; 1 ♂, Târgu Cărbunești, 29.09.1984, leg. M. Andrei; 1 ♂, Tismana, 31.07.1992, leg. G. Andrei; 2 ♀♀, Bratcu valley, 6.07.2004, leg. C. Ban; 1 ♂, the Locurele Hermitage, 8.07.2004, leg. C. Ban (GJ); 1 ♀, Călugăreni, 10.07.1983, leg. C. Pârvu; Comana forest: 1 ♂, 4 ♀♀, leg. A. L. Montandon (coll. A. L. Montandon); 10 ♂♂, 4 ♀♀, leg. R. Canisius; 3 ♂♂, 4 ♀♀, 16.06.1955, leg. N. Săvulescu (coll. N. Săvulescu); 1 ♀, 18.11.1955, leg. N. Săvulescu; 1 ♀, 19.05.1958, leg. I. Sienkiewicz; 1 ♀, 18.05.1959; 4 ♂♂, 2 ♀♀, 9.06.1963, leg. A. Roșca; 2 ♂♂, 5.07.1963; 1 ♀, 17.05.1970; 1 ♂, 24.05.1970; 1 ♀, 19.05.1971; 1 ♂, 1 ♀, 22.05.1971, leg. N. Săvulescu; 1 ♂, 23.06.1976, leg. I. Matache; 1 ♀, 10.08.1976, leg. D. Dumitrescu; 1 ♂, 12.09.1979, leg. A. Dumitru; 1 ♂, 1 ♀, 17.06.1989, leg. R. Serafim; 1 ♂, 26.09.1998, leg. Ș. Procheș; 1 ♀, 6.06.2006, leg. M. Stan; 1 ♂, Greaca (bank of the lake), 6.06.1965, leg. Barșischi; 1 ♂, Malu, km 502 on the dike, 29.04.2004, leg. Al. Iftime; 1 ♂, Cama islet, 7-16.06.2004, leg. M. Stan (GR); 1 ♀, Andronache forest, 21.09.1953, leg. X. Scobiola; Căldărușani forest: 1 ♂, 21.06.1960, leg. A. Roșca; 1 ♀, 24.05.1979; 1 ♂, 1 ♀, 25.05.1979, leg. D. Lupu; 1 ♂, Cernica forest, 15.08.1960, leg. A. Roșca; Chitila: 1 ♂, 27.04.1964, leg. ?; 2 ♂♂, 20.07.1991, leg. Ș. Procheș; 1 ♀, Copăceni, 23.09.1953, leg. X. Scobiola; 1 ♂, Dărăști, 06.1949, leg. ?; Pasărea forest: 4 ♂♂, 1 ♀, 28.05.1959, leg. N. Săvulescu (coll. N. Săvulescu); 1 ♂, 6.08.1962; 1 ♂, 19.06.1965, leg. A. Roșca; 1 ♀, Periș, leg. R. Canisius; 1 ♂, 1 ♀, Pustnicu forest, 5.07.1962, leg. A. Roșca; Snagov: 1 ♂, 17.07.1979, leg. X. Scobiola; 2 ♀♀, 22.07.1976, leg. I. Matache; 1 ♀, Țigănești forest, 20.04.1966, leg. A. Roșca; 1 ♂, 24.08.1967, leg. VI. Brădescu (IF); 2 ♂♂, Bucu, 22.07.1957, leg. I. Ceianu (IL); 1 ♀, Costești, 15.07.1979, leg. B. Vasilescu; 1 ♀, Poiana, 2.07.1980, leg. G. Andrei (HD); 1 ♂, Ada-Kaleh, 29.06.1969, leg. Șt. Negru; 1 ♂, Baia de Aramă (Bulba), 26.08.1992, leg. M. Andrei; 1 ♂, Cazane, 31.03.1966, leg. Șt. Negru; 1 ♂, 2 ♀♀, Drobeta Turnu Severin, 7.08.1964, leg. Șt. Negru; Dubova: 1 ♀, 24.05.1970; 1 ♂, 26.05.1970, 1 ♀, 29.05.1970, leg. N. Săvulescu; Eșelnița: 1 ♀, 4.06.1968, leg. X. Scobiola; 6 ♂♂, 3 ♀♀, 29.03.1970, leg. Șt. Negru; Ghelmeșioara: 2 ♂♂, 1 ♀, 2.06.1972; 1 ♂, 2 ♀♀, 22.05.1977, leg. N. Săvulescu; 1 ♂, Gura Văii, 29.07.1979, leg. N. Săvulescu; 1 ♂, Hinova, 6.06.1984, leg. C. Pârvu; 2 ♂♂, 1 ♀, Mraconia, 7.06.1967, leg. Șt. Negru; Orșova: 1 ♂, 8.11.1966; 1 ♀, 1.07.1969, leg. Șt. Negru; Ostrovul Mare: 1 ♀, 13.07.1979, leg. A. Popescu-Gorj; 1 ♀, 29.06.1984, leg. N. Pușcașu; Strehaia: 1 ♂, 2 ♀♀, 11.05.1982, leg. G. Andrei; 2 ♂♂, 12.05.1982; 1 ♀, 13.05.1982, leg. R. Serafim; 1 ♀, 15.05.1982, leg. D. Dumitrescu (MH); 1 ♀, Bistra, 28.06.1997, leg. I. Matache; 3 ♂♂, 6 ♀♀, Nagynyires (Mireșul Mare), 06.1916, leg. E. Váradi; 1 ♂, Repedea (forestry range), 22.06.1997, leg. R. Serafim; 1 ♀, Strâmtura (Podul Slătioarei forestry range), 2.07.1995, leg. D. Ruști (MM); 1 ♂, Gurghiu, 7.07.1952, leg. I. Ceianu (MS); Balș (Sarului forest): 1 ♀, 22.06.1981, leg. G. Andrei; 1 ♀, 22-26.06.1981, leg. M. Andrei; 1 ♀, 25.06.1981, leg. G. Andrei; 1 ♂, 20.06.1982, leg. D. Murariu; 1 ♂, Reșca (Romula), 15.05.1964, leg. Șt. Negru (OT); 2 ♂♂, 1 ♀, Buștenari, leg. R. Canisius; 1 ♂, Doftana, 8.07.1959, leg. X. Scobiola (PH); 1 ♂, Poiana Neamțului, 20.07.1985, leg. R. Serafim; 1 ♂, 1 ♀, Suru Peak (Făgăraș Mts), 18.08.1959, leg. N. Săvulescu (coll. N. Săvulescu) (SB); Babadag forest: 2 ♂♂, 1 ♀, 30.06.1956, leg. X. Scobiola; 1 ♂, 1 ♀, 20.06.1963, leg. X. Scobiola; 1 ♂, 1 ♀, 3.10.1963, leg. A. Marinescu; 1 ♂, 4.10.1963, leg. X. Scobiola; 1 ♀, 7.10.1975, leg. N. Săvulescu; 1 ♂, 21.07.1977, leg. A. Popescu-Gorj; Caraorman forest: 1 ♀, 18.06.1967;

1 ♀, 25.09.1967, leg. Șt. Negru; 1 ♂, 1 ♀, Ciucurova, coll. Ed. Fleck; 1 ♂, Crișan, 12.06.1968, leg. Șt. Negru; 1 ♀, Enisala, 29.06.1956, leg. ?; Greci: 1 ♂, 1 ♀, 17.06.1958; 1 ♂, 1 ♀, 30.06-7.07.1964, leg. I. Sienkiewicz; 3 ♂♂, 1 ♀, Isaccea, 25.06-3.07.1971, leg. N. Săvulescu; Letea forest: 1 ♀, 24.06.1958, leg. I. Sienkiewicz; 1 ♀, 14.07.1962, leg. Șt. Negru; 1 ♀, 8.05.1964, leg. X. Scobiola; 1 ♂, 1 ♀, 14.07.1971, leg. N. Săvulescu; Luncavița: 1 ♂, 1 ♀, 26.06.1956, leg. X. Scobiola; 1 ♀, 9.06.1964, leg. ?; 1 ♀ (Valea Fagilor forest), 24.05.2005, leg. C. Ban; 1 ♀, Maliuc, mile 26, 7.08.1991, leg. R. Serafim; Măcin: 1 ♀, leg. A. L. Montandon (coll. A. L. Montandon); 1 ♂, 1 ♀, 26.06.1967, leg. X. Scobiola; Niculițel (Cocoș Monastery): 1 ♂, 3 ♀♀, 9.06.1973, leg. A. Constantinescu; 1 ♂, 1 ♀, 1.07.1975, leg. A. Popescu-Gorj; Periprava: 2 ♂♂, 28.10.1963, leg. A. Popescu-Gorj; 2 ♀♀, 5-8.11.1964, leg. N. Săvulescu; 1 ♀, 19.11.1971, leg. ?; 1 ♀, 10.06.1995, leg. M. Stănescu; Sulina: 1 ♀, 8.07.1968, leg. M. Weinberg; 1 ♀, 17.06.1969, leg. I. Drăghia; 1 ♀, Telița (Celic Dere Monastery), 20.05.1997, leg. R. Serafim; Tulcea: 1 ♂, 23.06.1960, leg. ?; 1 ♀, 12.07.1969, leg. A. Roșca (TL); 1 ♂, Nemeșești, 20.07.2013, leg. L. Moscaliuc; 1 ♀, Pădurea Verde (Timișoara), 06.1950, leg. N. Săvulescu (TM); Alexandria: 1 ♂, 30.05.1958; 2 ♂♂, 1.06.1958, leg. A. Roșca; 5 ♂♂, 2 ♀♀, Roșiori de Vede, 1.10.1975, leg. I. Drăghia (TR); 1 ♀, Râmnicu Vâlcea, leg. R. Canisius (VL); Lepșa stream, Putna-Vrancea Natural Park: 2 ♂♂, 6.08.2013, leg. G. Chișamera & C. Constantinescu; 1 ♂, 7.08.2013, leg. C. Constantinescu; Răstoaca: 1 ♂, 4.09.1971; 1 ♀, 5.09.1975, leg. N. Săvulescu; 1 ♀, Tulnici, 22.07.1962, leg. A. Roșca (VN).

*Other examined specimens:* 1 ♀, Besançon (France), 1 ♀, Dürnstein (Krems-Land district, Austria), leg. M. Montandon, 1 ♂, Crete (Greece) (coll. A. L. Montandon).

Subfamily Lucaninae Latreille, 1804  
*Lucanus cervus cervus* (Linnaeus, 1758)  
(Fig. 2 B)

*Examined material:* 14 ♂♂, 5 ♀♀, Morărești, 17.06.1970, leg. N. Săvulescu; 2 ♂♂, 1 ♀, Pitești, 18.05.1958; 1 ♀, Stoenesti, 7.07.1990, leg. Ș. Procheș (AG); 2 ♂♂, Arad, 10.06.1954, leg. N. Săvulescu; 1 ♂, Utviniș (forest), 21.06.1977, leg. G. Andrei (AR); 1 ♀, Sânmartin, 28.08.1984, leg. D. Murariu (BH); București: 1 ♂, leg. A. L. Montandon (coll. A. L. Montandon); 2 ♀♀, leg. R. Canisius; 1 ♀, 10.08.1961; 1 ♀, 13.07.1966; 1 ♂, 10.06.1968; 1 ♀, 23.07.1968, leg. A. Roșca; 1 ♀, 11.07.1980, leg. I. Cacoveanu; 1 ♂, 25.05.1984, leg. A. Popescu-Gorj; 2 ♂♂, Museum's park, 27.05.1997, leg. D. Murariu; Băneasa forest: 1 ♂, 15.07.1979; 2 ♂♂, 16.07.1979, leg. N. Săvulescu; 1 ♀, 26.08.1991, leg. M. Stănescu; 1 ♂, 24.07.1998, leg. Al. Iftime (B); Arbănași (Beceni, school camp): 3 ♂♂, 2 ♀♀, 2.07.2005, in the deciduous forest; 1 ♀, 30.08.2005, in the mixed forest, leg. V. Ungureanu; 2 ♀♀, Costești (Spătaru forest), 24.06.1987, leg. C. Pârvu; Izvoru Dulce (Beceni): 1 ♂, 6.06.1999, in the garden, 1 ♂, 10.06.2000; 1 ♂, 25.07.2005, leg. V. Ungureanu; 1 ♀, Măgura, 21.06.2004, beech forest, near road, leg. M. Aurelian (BZ); Băile Herculane: 1 ♀, 07.1950, leg. E. Váradi; 1 ♂, 12.07.1952; 1 ♂, 2 ♀♀, 12.07.1962; 9 ♂♂, 10.05.1964; 2 ♂♂, 4.07.1964; 1 ♀, 26.05.1971; 1 ♀, 5.08.1971; 1 ♀, 18.05.1977; 1 ♀, 1.07.1977; 1 ♀, 2.07.1978; 1 ♂, 20.07.1978; 1 ♀, 12.07.1983, leg. N. Săvulescu; 1 ♂, 13.08.1962; 2 ♀♀, 26.05.1965; 1 ♂, 1.06.1965; 1 ♂, 14.07.1976, leg. A. Popescu-Gorj; 1 ♀, Domogled Mt., 26.05.1965, leg. Șt. Negru; 1 ♀, 9.07.1984, leg. C. Pârvu; 1 ♀, Bozovici, 6.07.1962, leg. A. Popescu-Gorj; 2 ♀♀, Gârliște, 7.08.2001, leg. R. Serafim; Moldova Nouă: 1 ♀, 26.05.1971; 2 ♀♀, 27.05.1971; 4 ♂♂, 28.05.1971; 1 ♂, 23.05.1972; 1 ♀, 24.05.1973; 1 ♀, 25.05.1973; 5 ♀♀, 26.05.1973, leg. N. Săvulescu; 1 ♀, Nera Gorges (Lindini

Clearing), 15.05.2002, leg. V. Tatole; 1 ♂, Oravița, 24.05.1975, leg. N. Săvulescu; 1 ♀, Sasca Montană (Damian forestry range), 10.08.2005, leg. E. Pisciă (CS); Baș Punar (Fântâna Mare): 2 ♂♂, 22.07.1955; 2 ♂♂, 1 ♀, 11.06.1959; 1 ♂, 17.06.1959, leg. N. Săvulescu; Canaraua Fetii: 2 ♀♀, 10.07.1964; 1 ♂, 2 ♀♀, 19.07.1964; 3 ♂♂, 27.07.1965; 6 ♂♂, 14.07.1966, leg. N. Săvulescu; Dumbrăveni forest (forestry range Furnica): 1 ♂, 18.06.1996, leg. M. Stănescu; 1 ♂, 24.06.1996, leg. N. Răduleț; Hagieni forest: 1 ♂, leg. N. Săvulescu; 5 ♂♂, 30.06.1973, leg. A. Popescu-Gorj; Negureni forest (Băneasa): 3 ♂♂, 2 ♀♀, 28.06.1990; 2 ♂♂, 1 ♀, 29.06.1990; 4 ♂♂, 30.06.1990; 3 ♂♂, 1 ♀, 1.07.1990; 3 ♂♂, 1 ♀, 2.07.1990; 5 ♂♂, 3.07.1990; 1 ♂, 1 ♀, 4.07.1990, 1 ♂, 1 ♀, 5.07.1990, leg. N. Săvulescu; 1 ♀, 22.07.1993; 2 ♂♂, 23.07.1993; 1 ♂, 1 ♀, 24.07.1993, leg. G. Andrei (CT); 14 ♂♂, 4 ♀♀, Gulia, Tărtășești 28.06.1993, leg. C. Pârnu (DB); 4 ♀♀, Castrele Traiane (Plenița forest), 6-8.10.1981, leg. R. Serafim & I. Matache; 1 ♂, Cobia, 27.09.1983, leg. D. Murariu; Perișor: 1 ♂, 22.09.1982, 1 ♂, 23.09.1982, leg. R. Serafim; 1 ♀, 23.09.1982, leg. G. Andrei; 1 ♀, 24.09.1982, leg. R. Serafim; 2 ♂♂, Radovan (Panaghia forest), 16.06.1984, leg. G. Andrei (DJ); 1 ♂, Sohodol Gorges, 21.06.1992, leg. C. Pârnu; 2 ♀♀, Târgu Cărbunești, 29.09.1984, leg. G. Andrei; 1 ♂, 1 ♀, Târgu Jiu, 29.06.1969, leg. N. Săvulescu (coll. N. Săvulescu); 1 ♂, Zorlești, 23.08.1995, leg. Ș. Procheș; 1 ♀, the Locurele Hermitage, 8.07.2004, leg. C. Ban (specimen damaged) (GJ); Comana forest: 9 ♂♂, 18 ♀♀, leg. A. L. Montandon (coll. A. L. Montandon); 4 ♂♂, leg. R. Canisius; 2 ♂♂, 24.06.1954; 1 ♀, 9.05.1955; 1 ♂, 23.05.1955; 16 ♂♂, 8.07.1963, leg. N. Săvulescu; 1 ♂, 19.05.1958, leg. I. Sienkiewicz; 1 ♂, 25.06.1962, 1 ♀, 28.06.1974, leg. A. Popescu-Gorj; 1 ♀, 19.07.1963, leg. I. Drăghia; 1 ♀, 25.06.1976, leg. Șt. Negru; 1 ♂, 28.07.1976, leg. G. Andrei; 1 ♀, 9.08.1976, leg. G. Romanca; 1 ♀, 9.09.1977, leg. N. Gâldean; 1 ♀, 12.09.1979, leg. A. Dumitru; 2 ♀♀, 30.06.1981, leg. I. Drăghia; 3 ♂♂, 1 ♀, 14.07.1989, leg. R. Serafim & A. Bănărăscu; 2 ♀♀, Crevedia Mare, 18.08.1976, leg. M. Andrei; 4 ♂♂, km 36, București-Pitești highway, 1.07.2003, leg. M. Taloi (GR); Brănești forest: 1 ♀, 5.07.1962; 1 ♂, 13.08.1963, leg. A. Roșca; Căldărușani forest: 1 ♂, 15.07.1959, leg. A. Roșca; 1 ♂, 27.07.1962, leg. S. Helwing; Cernica forest: 1 ♀, 5.07.1960, leg. A. Roșca; 1 ♀, 18.08.2009, leg. Șt. Iorgu (collected dead specimen); 2 ♂♂, Corbeanca, 8.06.1996, leg. D. Murariu; Mogoșoaia: 1 ♀, 12.07.1961, leg. ?; 1 ♀, 5.07.1967, leg. ?; Pasărea forest: 1 ♂, 1.07.1951; 1 ♂, 25.05.1959; 1 ♂, 29.05.1959; 1 ♀, 4.06.1959; 1 ♂, 8.06.1959; 1 ♀, 4.07.1962; 27 ♂♂, 2 ♀♀, 4.07.1963; 23 ♂♂, 22.05.1963; 1 ♂, 5.07.1963; 2 ♂♂, 1 ♀, 7.07.1970; 1 ♂, 9.07.1970, leg. N. Săvulescu; 1 ♂, 5.07.1960; 1 ♀, 29.06.1962, leg. A. Roșca; 1 ♀, 10.07.1963, leg. Vl. Brădescu; 1 ♂, 12.07.1984, leg. D. Murariu; 1 ♂, 1992, leg. Ș. Procheș; Snagov: 3 ♀♀, 27.07.1962, leg. S. Helwing; 2 ♀♀, 07.1975; 1 ♀, 5.08.1976; 1 ♀, 17.07.1979; 3 ♀♀, 23.07.1979, leg. X. Scobiola; 2 ♂♂, 7.07.1991; 9 ♂♂, 1 ♀, 11.07.1991; 3 ♂♂, 12.07.1991; 1 ♂, 13.07.1991; 35 ♂♂, 9 ♀♀, 14.07.1991, leg. I. Șandor (IF); 2 ♂♂, 1 ♀, Bârnova, 26.06.1968, leg. N. Săvulescu (IS); 1 ♀, Poiana, 2.07.1980, leg. G. Andrei (HD); 1 ♂, Drobeta Turnu Severin, 23.06.? (coll. Ed. Fleck); 1 ♂, Eșelnița, 17.05.1964, Șt. Negru; Gura Motrului: 2 ♂♂, 1 ♀, 21.06.1983, leg. I. Matache & C. Pârnu; 1 ♀, 22.06.1983, leg. R. Serafim; Gura Văii: 1 ♂, 1 ♀, 3.07.1978; 2 ♂♂, 4.07.1978, leg. N. Săvulescu; 1 ♂, Orșova, 27.04.1968, leg. Șt. Negru; 1 ♂, Svinița, 14.05.1969, leg. A. Popescu-Gorj; 1 ♀, Mraconia valley, 19.05.1968, leg. M. Weinberg (MH); 1 ♀, Bârsana, 5.07.1995, leg. C. Pârnu; 1 ♂, Bistra (Bistra valley), 28.05.1998, leg. N. Răduleț; Nagynyíres (Mireșul Mare): 3 ♂♂, 07.1916; 4 ♂♂, 4 ♀♀, 08.1916; leg. E. Váradi; 1 ♀, Maramureș?, 30.07.1960, leg. ? (MM); 1 ♂, 1 ♀, Târgu Mureș, 10.06.2000, leg. P. Istrate (MS); Palanca forest (Nicolae Titulescu): 3 ♂♂, 23.06.1980, leg. I. Drăghia; 5 ♂♂, 1 ♀, 24.06.1980, leg. I. Matache & C. Pârnu; 1 ♂, 2 ♀♀, 25.06.1980, leg. R. Serafim; 2 ♂♂, Sarului forest

(Baş), 22-26.06.1981, leg. M. Andrei; 1 ♀, Strehareţ forest (Slatina), 26.07.1980, leg. R. Serafim (OT); 1 ♀, Breaza, 1985, leg. Al. Iftime; 1 ♀, Lunca Prahovei (Măgureni), 24.10.1964, leg. Şt. Negru; 1 ♂, Ciucaş Mts, 16.07.2009, leg. I. Iorgu (PH); 1 ♀, Gura Humorului, 8.08.1986, leg. M. Manoliu; 8 ♂♂, 3 ♀♀, Râşca (Slătioara), 05.1983, leg. M. Băcescu; 1 ♀, Suceava, 17.07.1975, leg. I. Nemeş (SV); 9 ♂♂, 3 ♀♀, Babadag forest (Slava Rusă), 22.06.1993, leg. I. Matache & M. Stănescu; 1 ♂, Caraorman, 25.06.1991, leg. G. Andrei; 3 ♂♂, Celic Dere, 13.07.1992, leg. A. Marinescu; 1 ♂, Ciucurova, 19.06.1981, leg. N. Săvulescu; Greci: 1 ♀, 21.07.1962, leg. A. Roşca; 1 ♀, 6.09.2005, leg. E. Piscică; 1 ♀, Murighiol, 16.08.1978, leg. A. Papadopol; 1 ♀, Niculiţel (Cocoş Monastery), 1.07.1975, leg. A. Popescu-Gorj; 1 ♂, 1 ♀, Letea forest, 14.07.1962, leg. N. Săvulescu; 1 ♂, Sulina, 9.07.1973, leg. N. Săvulescu; Slava Rusă: 1 ♀, 29.06.1962, leg. X. Scobiola; 1 ♂, 2 ♀♀, 11.08.1991, leg. Ş. Procheş; 1 ♀, 22.06.1993, leg. M. Stănescu; 1 ♀, Tulcea, leg. R. Canisius; 1 ♀, Suluc valley (Măcin Mts), 18.07.2006, leg. I. Matache (TL); Drăgăneşti-Vlaşca: 1 ♂, 20.06.1979, leg. I. Matache; 1 ♀, 26.06.1980, leg. I. Matache (TR); 1 ♀, Călimăneşti, 08.1969, leg. N. Săvulescu; 1 ♂, Stânişoara Monastery, 16.06.2002, leg. D. Murariu (VL); 1 ♀, Focşani, 1.07.1978, leg. X. Palade; 8 ♂♂, Mărăşeşti, 6.06.1970, leg. N. Săvulescu; 2 ♀♀, Răstoaca, 2.09.1972, leg. N. Săvulescu; 1 ♀, Vidra, 24.07.1962, leg. A. Roşca (VR).

*Observed and photographed specimens:* 1 ♂, Celic Dere (TL), 07.2006; 1 ♀, Obârşia Lotrului, 26.07.2007; males and females, Pârăul Boghii (BC), 06-07.2011 (Al. Iftime); Bucureşti (Museum's park): 2 ♂♂, 6.06.2006 (D. Ruşti & L. Ristache); 1 ♂, 16.06.2007 (A. Petrescu); 1 ♂, 9.07.2007 (M. Foaltin); 1 ♂, 22.06.2009 (I. Iorgu); 1 ♂, 29.07.2009 (M. Taloi); 1 ♂, Caşin Monastery, 25.06.2012 (B. Matei); 1 ♀, Mehedinţa (Podenii Noi, PH), in the garden, 06.2011; males and females, Bârnova-Repedea forest (IS), 04-10.06.2012; 1 ♀, Muntele Rece (CJ), 18.06.2012; 1 ♂, Frăşinet (CJ), 19.06.2012; 7 ♂♂, 1 ♀, 5.07.2013 and 6 ♂♂, 7 ♀♀, 12.07.2013 in Comana Natural Park (part of them being trampling of the cars) (M. Stan).

*Other specimens in the Museum's collections:* 1 ♂, 1 ♀, from Doubs (France) (coll. A. L. Montandon); 1 ♂, from Melle, Oise (France) (donation G. Seillière); 1 ♂, 1 ♀, Sochi (Dendrarium), Russia, 10.08.1992, leg. Ş. Procheş; 1 ♀, Dobrich (Bulgaria), 3.09.2009 leg. G. Chişamera; 1 ♂, 1 ♀, Vasilevo (Bulgaria), 3.09.2009, deciduous forest, leg. I. Petrescu & A. Petrescu.

### *Platycerus caprea* (De Geer, 1774)

(Figs 1 B; 3 A, B)

*Examined material:* 1 ♂, coll. D. Kenderessy (without collecting data); 1 ♂, coll. Ed. Fleck (without collection data); 1 ♀, Cruce (SV), leg. A. L. Montandon (coll. A. L. Montandon); 1 ♀, Jiul de Vest valley, 1.07.1976, leg. D. Gîrlea.

### *Platycerus caraboides caraboides* (Linnaeus, 1758)

(Figs 1 B; 4 A, B)

*Examined material:* 1 ♂, Dâmbovicioara Gorges, 15.05.1990, leg. M. Andrei; 1 ♀, Şpirla valley (Piatra Craiului Mts), 10.07.1990, leg. I. Ronai (AG); 1 ♂, Bucureşti (Băneasa forest), 14.04.1951, leg. N. Săvulescu (B); 1 ♀, Măgura, forest beech, forestry road to Cetăţuia Monastery, 23.06.2004, leg. V. Ungureanu (BZ); Băile Herculane: 1 ♂, 25.07.1961; 1 ♂, 17.05.1962; 2 ♂♂, 1 ♀, 11.07.1962, leg. N. Săvulescu; 1 ♂, 17.05.1964, leg. A. Popescu-Gorj; 1 ♂, 2.05.1987, leg. Vl. Brădescu; 1 ♂, Moldova Nouă, 15.05.1974, leg. N. Săvulescu (CS); 1 ♀, Cernavodă, leg. R. Canisius (CT); 1 ♂, 1 ♂, Periş, leg. R. Canisius; 1 ♂, Mogoşoia, 27.04.1980, leg. Vl.

Brădescu (IF); Bârnova forest: 2 ♀♀, 19.05.1956; 1 ♀, 20.06.1969, leg. N. Săvulescu (IS); 1 ♂, Bîtlanele, 16.05.1982, leg. D. Dumitrescu (MH); 5 ♂♂, Vişeu de Sus, 10.06.1965, leg. N. Săvulescu (MM); 1 ♂, Mezeş Mts, 25.05.1976, leg. A. Takács; 1 ♀, Călineşti Oaş, 21.05.1987, leg. R. Serafim (SM).

*Other examined material:* 1 ♀, Burgberg (Germany).

Subfamily Syndesinae MacLeay, 1819  
*Ceruchus chrysomelinus* (Hochenwarth, 1785)  
 (Fig. 1 A)

*Examined material:* 1 ♂, Moineşti, leg. R. Canisius (BC); 5 ♂♂, 6 ♀♀, Sîriu, 22.10.1960, leg. N. Săvulescu (BZ); 1 ♂, 1 ♀, Azuga, 8.08.?, coll. Ed. Fleck; 1 ♂, Sinaia, leg. R. Canisius; Sinaia (Bucegi Mts): 2 ♂♂, 21.06.1963; 1 ♂, 28.06.1969, leg. A. Roşca; 1 ♂, 1 ♀, 27.10.1964, leg. Şt. Negru; 17 ♂♂, 12 ♀♀, 19.10.1967; 2 ♂♂, 2 ♀♀, 11.10.1971; 1 ♂, 9.11.1974; 1 ♀, 14.11.1974, 1 ♂, 16.11.1974, leg. N. Săvulescu (PH); 1 ♂, 1 ♀, Cruce, leg. A. L. Montandon (SV); 5 ♂♂, 2 ♀♀, Jiva valley (Călimani Mts), 08.1951, leg. N. Săvulescu; 15 ♂♂, 9 ♀♀, Răstoliţa (Călimani Mts), 16.06.1956, leg. N. Săvulescu (coll. N. Săvulescu); Capra Peak (Făgăraş Mts): 1 ♂, 19.08.1954; 1 ♀, 17.08.1959; 3 ♂♂, 3 ♀♀, 19.08.1959, leg. N. Săvulescu (coll. N. Săvulescu); 4 ♂♂, Ceahlău Mt., 10.09.1957, leg. N. Săvulescu; 1 ♂, Retezat Mts, 11.07.1958, leg. N. Săvulescu.

*Sinodendron cylindricum* (Linnaeus, 1758)  
 (Fig. 1 A)

*Examined material:* Băile Herculane: 1 ♂, 5.07.1960; 1 ♀, 9.07.1960; 1 ♂, 5.11.1961; 3 ♂♂, 4 ♀♀, 12.06.1967; 1 ♂, 9 ♀♀, 2.07.1967; 1 ♂, 1 ♀, 12.06.1970, leg. N. Săvulescu; 1 ♂, Oraviţa (Marila), 1.07.1953, leg. N. Săvulescu (CS); 1 ♂, Drobeta Turnu Severin, 2.08.1964, leg. Şt. Negru; 1 ♀, Ghelmeşioaia, 1.06.1971, leg. N. Săvulescu (MH); 2 ♀♀, Covasna, 27-28.06.1987, leg. Vl. Brădescu (CV); 1 ♀, Crasna Vişeuului, Frumuşaua river, 29.08.1997, leg. C. Pârnu; 1 ♂, Făina (Vaser valley), 22.07.2004, leg. G. Chişamera (MM); Azuga: 1 ♂, 5.07.?.; 1 ♂, 14.07.?.; 1 ♀, 16.07.?, coll. Ed. Fleck; 1 ♂, Poiana Țapulului, leg. R. Canisius; Sinaia: 1 ♂, 19.07.1953; 1 ♂, 28.06.1969; leg. A. Roşca; 1 ♀, leg. R. Canisius (PH); 1 ♀, Răşinari, 2.07.1963, leg. N. Săvulescu (SB); 1 ♂, Râmnicu Vâlcea, leg. R. Canisius; 1 ♂, Voineasa, 1.08.1996, leg. Ş. Procheş (VL); 1 ♀, Parâng Mts (Parâng chalet), 30.11.1952, leg. N. Săvulescu; 2 ♂♂, Ciucaş Mts, Zăganu Peak, 07.1953; 1 ♂, Făgăraş Mts, Capra Peak, 28.07.1957, leg. N. Săvulescu; 1 ♀, Soveja, Cerbului valley, 16-17.10.1970; 4 ♂♂, 3 ♀♀, Lepşa (Vrancea Mts), 29.06.1971, leg. D. Lupu (VR); 1 ♀, Cindrel Mts (Gătul Berbecului), 17.06.1978, leg. Z. Muradian; 1 ♂, Ciucaş Mts, 9.07.1978, leg. G. Andrei; Retezat Mts: 1 ♂, 17.07.1956, leg. A. Roşca; Rotunda chalet: 1 ♂, 5.08.1979; 1 ♂, 7.08.1982, leg. Vl. Brădescu; 1 ♂, Şpirla valley (Piatra Craiului Mts), 12.07.1990, leg. R. Serafim; 1 ♀, Giumalău Mts, 11.07.2006, leg. E. Pisciă.

DISCUSSIONS

*Dorcus parallelipipedus* (Linnaeus) and *Lucanus cervus cervus* (Linnaeus) are better represented in the Museum collections in comparison with the other five species. Most specimens come from the collecting made by the specialists of the Museum during different research projects on the Romanian Plain, Banat, the Danube Delta and Maramureş. *Aesalus scarabaeoides scarabaeoides* (Panzer) is represented in the MGAB collection only by the specimen collected by A. L. Montandon (coll.



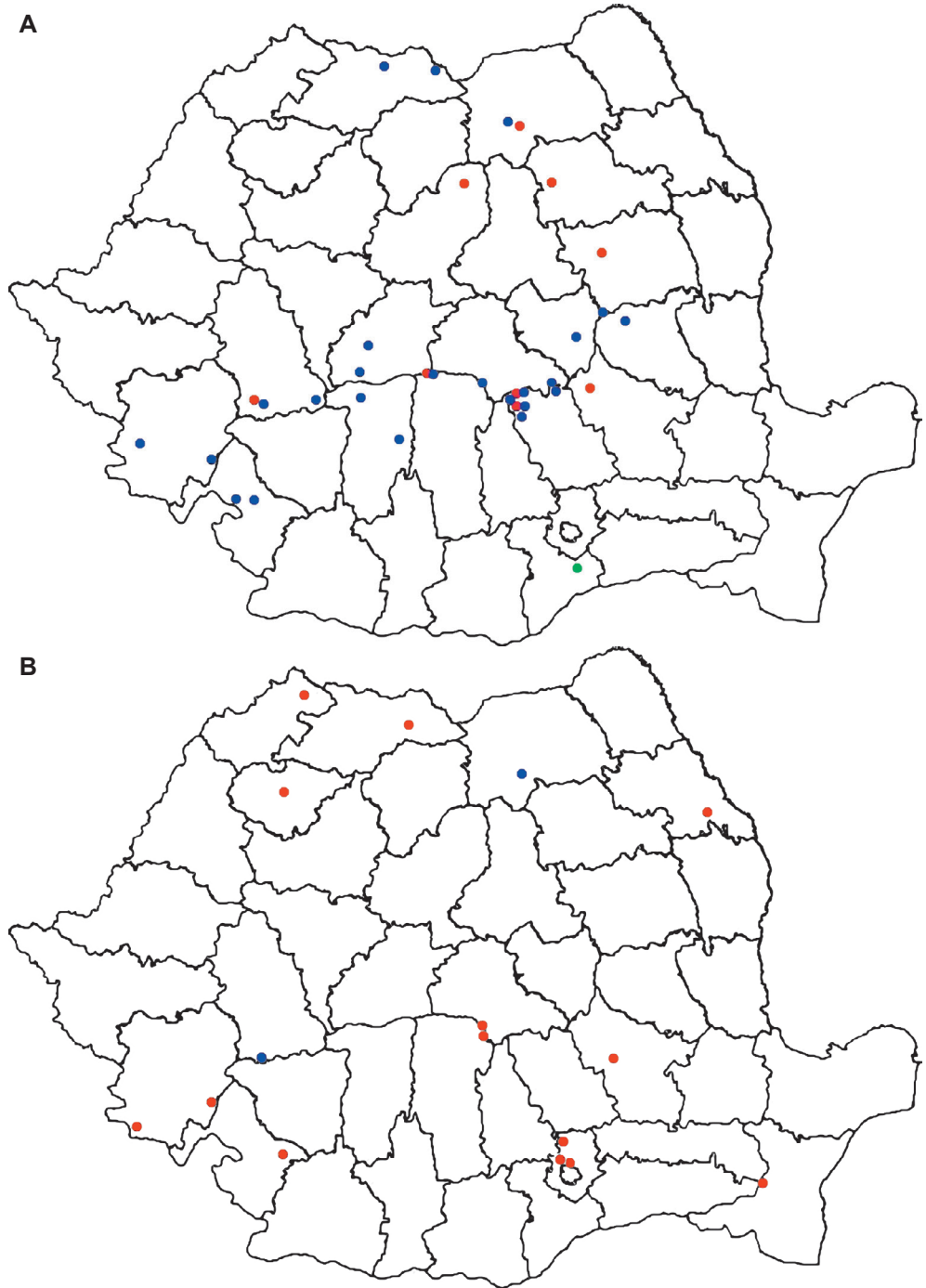


Fig. 1 - Distributions in Romania of *Aesalus scarabaeoides scarabaeoides* (green bullet), *Ceruchus chrysomelinus* (red bullets) and *Sinodendron cylindricum* (blue bullets) (A) and *Platycerus caprea* (blue bullets), *Platycerus caraboides caraboides* (red bullets) (B) based on examined material.

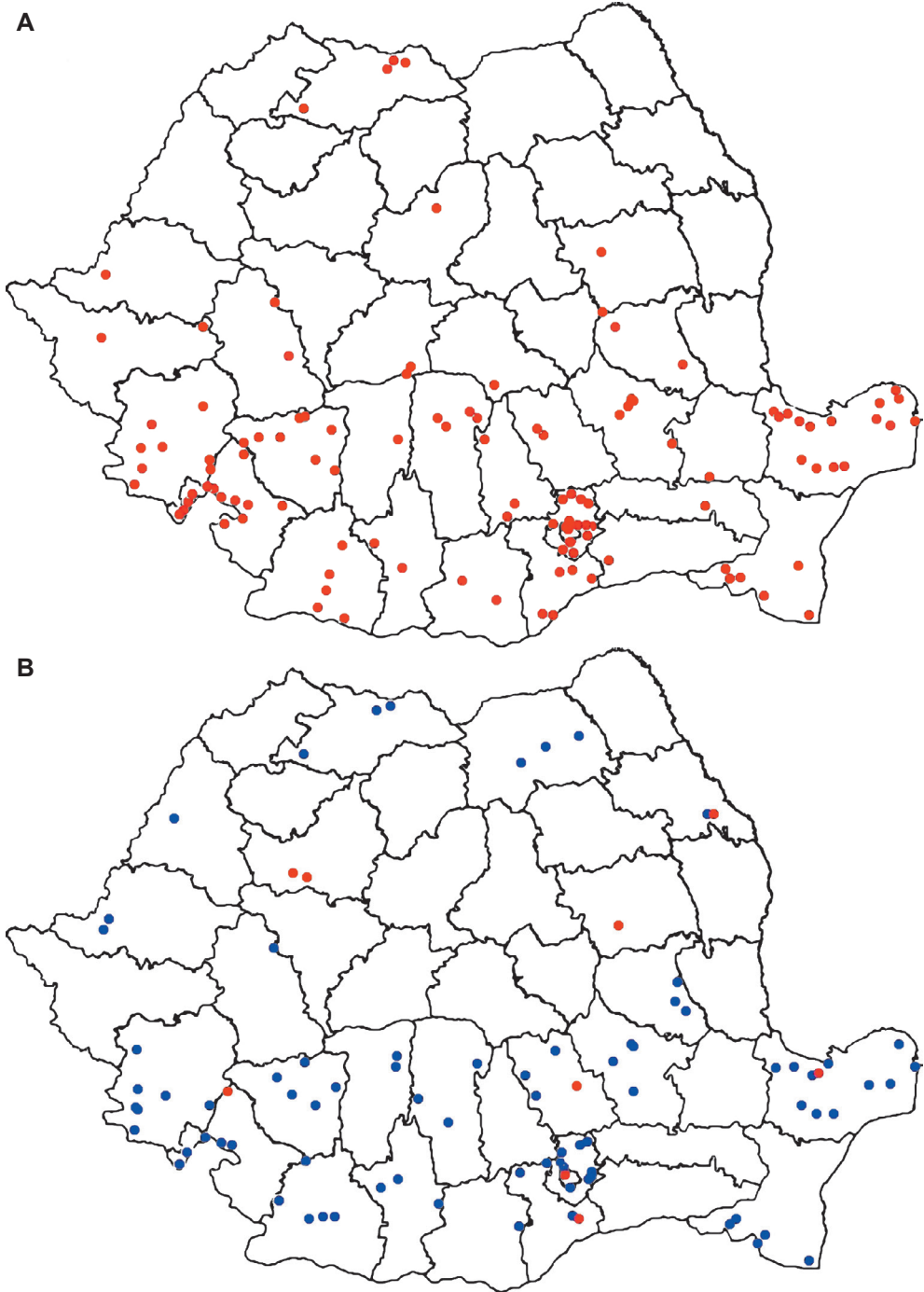


Fig. 2 - Distributions in Romania of *Dorcus parallelipedus* (A) based on examined material and *Lucanus cervus cervus* (B) based on examined material (blue bullets) and observed/photographed specimens (red bullets).

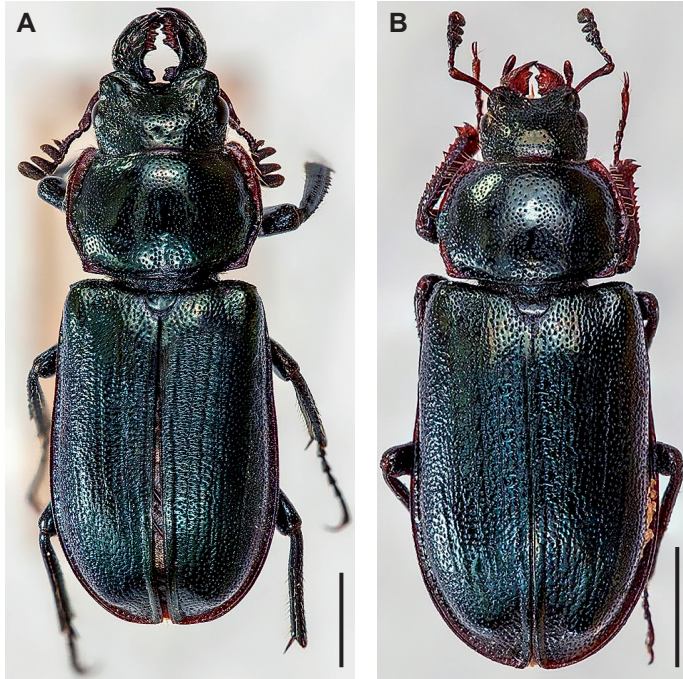


Fig. 3 - *Platycerus caprea* (De Geer): habitus male (A), habitus female (B). Scale: 2.5 mm.

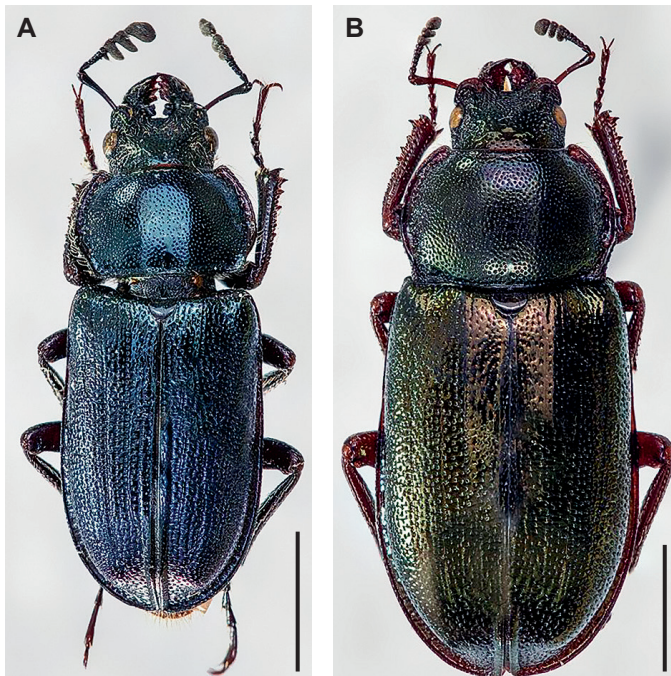


Fig. 4 - *Platycerus caraboides caraboides* (Linnaeus): habitus male (A), habitus female (B). Scale: 2.5 mm.

A. L. Montandon) from Comana (GR). The two females of *Platycerus caprea* (De Geer) have collecting data, but we do not know from where the male specimens come, however, they are useful as comparative material. *Ceruchus chrysomelinus* (Hochenwarth), with a mountain distribution, was not collected for a very long time, the last specimens being collected by Dr. Nicolae Săvulescu, in 1974.

#### ACKNOWLEDGEMENTS

My sincere thanks are due to my colleagues Dr. Alexandru Iftime for generating the distribution maps and Dr. Ionuț Iorgu for the photos. We are grateful to anonymous reviewers for improving the paper.

#### SPECII DE LUCANIDAE DIN FAUNA ROMÂNIEI (COLEOPTERA: SCARABAEOIDEA: LUCANIDAE) ÎN COLECȚIILE MUZEULUI NAȚIONAL DE ISTORIE NATURALĂ "GRIGORE ANTIPA"

#### REZUMAT

În fauna României, familia Lucanidae este reprezentată prin șapte specii. Acestea se găsesc și în colecțiile Muzeului Național de Istorie Naturală "Grigore Antipa": *Aesalus scarabaeoides scarabaeoides* (Panzer), *Ceruchus chrysomelinus* (Hochenwarth), *Sinodendron cylindricum* (Linnaeus), *Lucanus cervus cervus* (Linnaeus), *Platycerus caraboides caraboides* (Linnaeus), *Platycerus caprea* (De Geer) și *Dorcus parallelipedus* (Linnaeus). Informații privind datele de colectare și hărți de distribuție în România sunt date pentru fiecare specie. În cazul celor două specii de *Platycerus* sunt prezentate fotografiile ale habitusului mascul și femel.

#### LITERATURE CITED

- BARTOLOZZI, L., E. SPRECHER-UEBERSAX, 2006 - Lucanidae. Pp. 63-77. In: I. Löbl, A. Smetana (eds), Catalogue of Palaearctic Coleoptera. Vol. 3. Scarabaeoidea-Scirtoidea-Dascilloidea-Buprestoidea-Byrrhoidea. Stenstrup, Apollo Books. 690 pp.
- FLECK, E., 1906 - Die Coleopteren Rumäniens. Bulletin de la Société des Sciences de Bucarest-Roumanie, 3-4: 3-336.
- MONTANDON, A. L., 1906 - Notes sur la faune entomologique de la Roumanie. (Coleoptera). Bulletin de la Société des Sciences de Bucarest-Roumanie, 5 (1-2): 30-80.
- NEGRU, ȘT., A. ROȘCA, 1967 - Ord. Coleoptera. In: L'entomofaune des forêts du sud de la Dobroudja. Travaux du Muséum d'Histoire Naturelle "Grigore Antipa", 7: 119-148.
- PROCHEȘ, M. Ș., 1997 - Stag beetles (Coleoptera: Lucanidae) of Romania. A Biogeographical and ecological review. Analele Universității din București. Biologie, 46: 99-104.

Received: November 4, 2013  
Accepted: December 23, 2013

"Grigore Antipa" National Museum of Natural History  
Șos. Kiseleff 1, 011341 Bucharest 2, Romania  
e-mail: mstan@antipa.ro